

S O F I T E L
HOTELS & RESORTS

سوفيتل دبي داون تاون
DUBAI DOWNTOWN



MORE THAN A MILLION CRYSTAL CHANDELIER

Crystal symbolizes the flair of fantasy and romance, as an expression of timeless elegance and of a noble lifestyle. As you enter in Sofitel Dubai Downtown, rising gracefully amid the skyscrapers of Downtown Dubai, immerse yourself in a world of lights, and experience the wonder of crystal. Look up to this majestic masterpiece, handcrafted with more than a million crystals, all sparkling like diamonds. The irregularity of its “Crystal Ribbons” made with perfectly cutout crystal orbs, gives this piece a calming impression, and will simultaneously offer you a feeling of being lifted into the clouds.

LOCATION

VOYAGE TO THE CENTER OF DOWNTOWN DUBAI

The only international 5-star hotel linked to “The Dubai Mall” through an air-conditioned skywalk. Apart from the immediate proximity to The Dubai Mall and Burj Khalifa, the hotel is a few minutes walk from Coca-Cola Arena, Dubai Opera, City Walk, metro station, as well as offering shuttle bus service to Kite Beach, La Mer Beach, The Mall of the Emirates and other destinations.

The hotel offers an exceptional setting for business, leisure and exploration within the New and Old Dubai. Welcome to the finer side of sophistication where you can step into a world of refined European heritage linked to a local culture, elegance and seamless luxury.



ROYAL SUITE

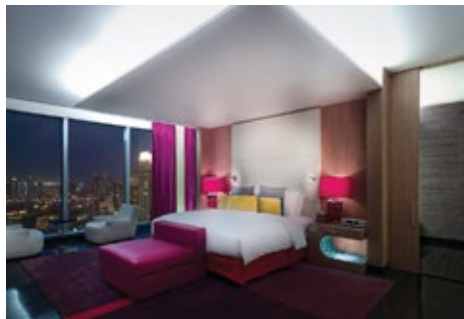
Step into the ultimate hospitality, where custom-created fabrics and bespoke Sofitel furniture set the scene for the perfect stay. The dining area provides a homely touch and is the ideal place for sharing and entertaining with family and friends. Our private butler will ensure the Royal suite guests' every need throughout the stay. Panoramic views over the spectacular skyline of Downtown Dubai await you and the opulent marble bathroom with its jacuzzi area will add to the feeling of total luxury.

For Your Comfort

- King-size bed
- Bespoke signature Sofitel MyBed™
- Pillow menu to suit personal preferences
- Separate living room

A Thoughtfully Appointed Bathroom

- Large bathroom, separate bathtub, steam-shower
- Selection of upscale signature Hermès toiletries and luxury bath amenities
- Private jacuzzi with LED HD TV



The Latest In Must-Have Technology

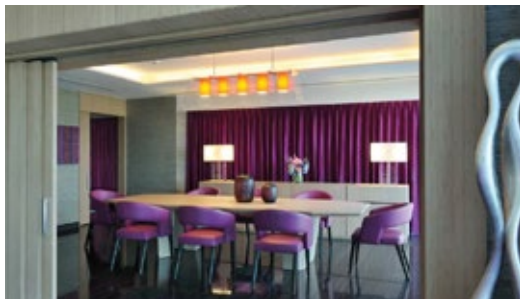
- LED HD TV, JBL© sound system,
- Complimentary wifi
- iMac computer

Your Every Need Anticipated

- 24-Hour in-room dining
- Mini bar with coffee machine
- Access to Club Millésime VIP lounge
- Complimentary return airport transfer
- Butler service
- Kitchen pantry
- Private service entrance
- Possibility to connect with Opera Suite

←
243-333







PRESIDENTIAL SUITES

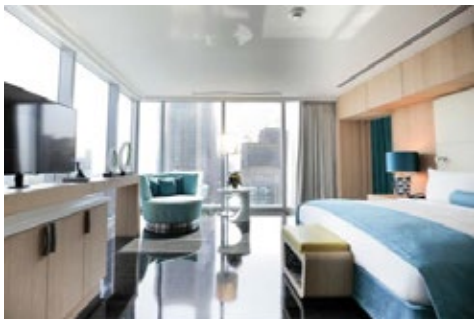
An elegant oasis that lifts your mood and senses. Bespoke Sofitel furniture and elegant style come together to create a 147sqm room of luxury, with spectacular Downtown Dubai views whether from the comfort of the room or the unrivaled vantage point of the living room. An opulent marble bathroom and a separate dressing area completes your experience, creating a whole new ambience with its spaciousness.

For Your Comfort

- King-size bed
- Bespoke signature Sofitel MyBed™
- Pillow menu to suit personal preferences
- Separate living room

A Thoughtfully Appointed Bathroom

- Large bathroom, separate bathtub, steam-shower
- Selection of upscale signature Hermès toiletries and luxury bath amenities



The Latest In Must-Have Technology

- LED HD TV, JBL® sound system
- Complimentary wifi

Your Every Need Anticipated

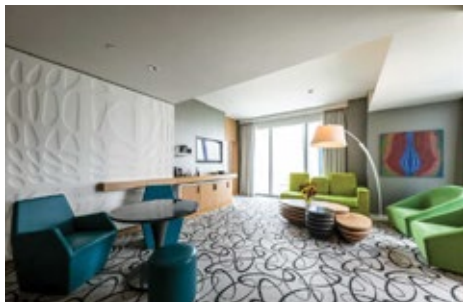
- 24-Hour in-room dining
- Mini bar with coffee machine
- Access to Club Millésime VIP lounge
- Complimentary return airport transfer
- Butler service
- Kitchen pantry
- Private service entrance
- Possibility to connect to a second bedroom (King)

147-193 sqm x3



2 BEDROOM DOWNTOWN SUITES

Ideal for families, open the door to up to 150 sqm of understated elegance and convenience. Generous living area serves your every purpose, from entertaining, reconnecting or simply unwinding. Sink into a haven of signature Sofitel luxury and close your eyes to splendid city skyline views to dream about.



For Your Comfort

- King-size beds or twin bed to choose from
- Bespoke signature Sofitel MyBed™
- Pillow menu to suit personal preferences
- Separate living room

A Thoughtfully Appointed Bathroom

- Large bathrooms, separate bathtubs and rain-showers
- Selection of upscale signature toiletries and luxury bath amenities

The Latest In Must-Have Technology

- LED HD TVs, JBL© sound system, Complimentary wifi

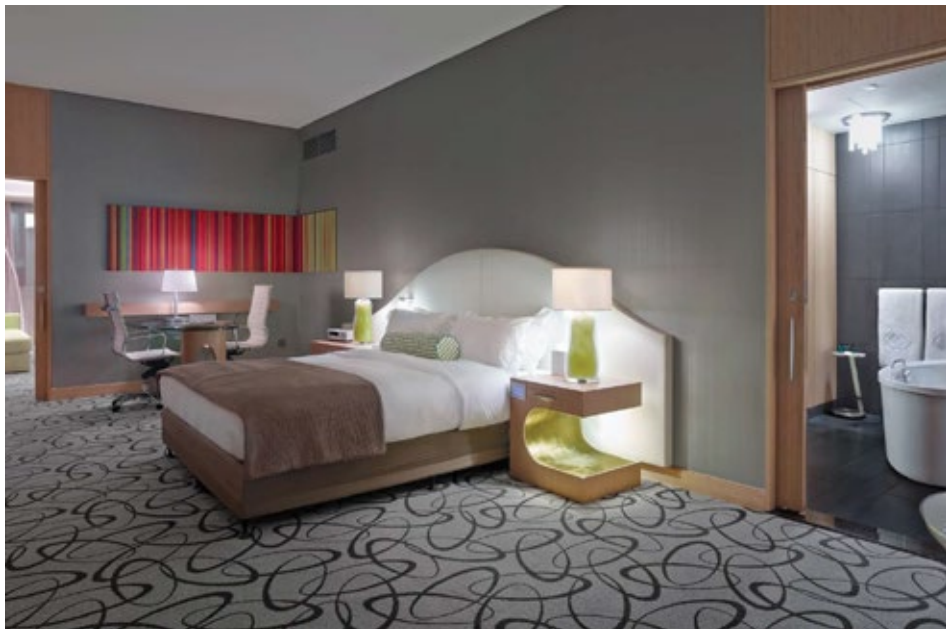
Your Every Need Anticipated

- 24-Hour in-room dining
- Mini bar with coffee machine
- Complimentary return airport transfer

← 150 sqm x12







OPERA SUITES

This spacious corner suite is an idyllic setting to enjoy the treasures of Dubai that never sleeps. From the living room to the large marble bathroom, take in the incredible Arabian coastline and Downtown Dubai views which frame the suite's tastefully decorated interiors.

For Your Comfort

- King-size bed
- Bespoke signature Sofitel MyBed™
- Pillow menu to suit personal preferences
- Separate living room

A Thoughtfully Appointed Bathroom

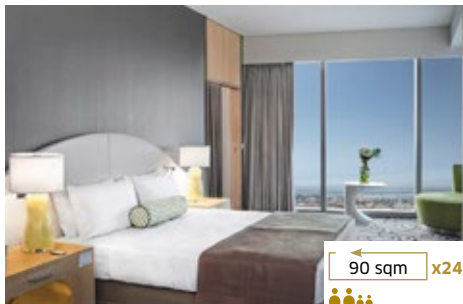
- Large bathroom, separate bathtub and rain-shower
- Selection of upscale signature toiletries and luxury bath amenities

The Latest In Must-Have Technology

- LED HD TV, JBL® sound system
- Complimentary wifi

Your Every Need Anticipated

- 24-Hour in-room dining
- Mini bar with coffee machine
- Access to Club Millésime VIP lounge



PRESTIGE SUITES

Harmoniously designed, this suite offers you the opulence and refinement of distinct contemporary style including exclusive access to Club Millésime. Entertain and unwind in the separate living room, bath in inspiring views of the Arabian coastline through the floor-to-ceiling windows.

For Your Comfort

- King-size bed
- Bespoke signature Sofitel MyBed™
- Pillow menu to suit personal preferences
- Separate living room

A Thoughtfully Appointed Bathroom

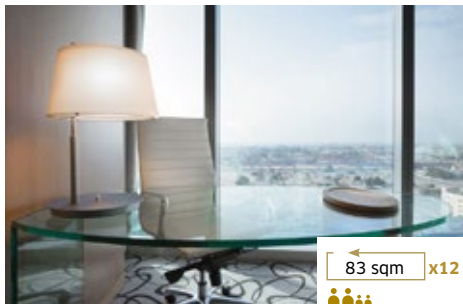
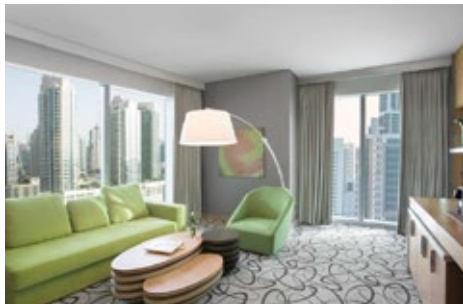
- Large bathroom, separate bathtub and rain-shower
- Selection of upscale signature toiletries and luxury bath amenities

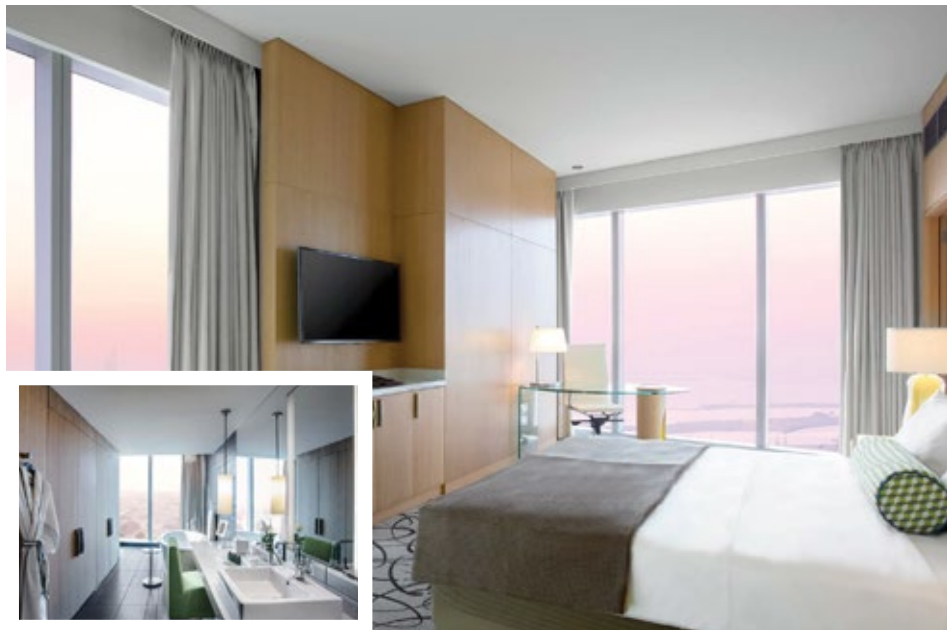
The Latest In Must-Have Technology

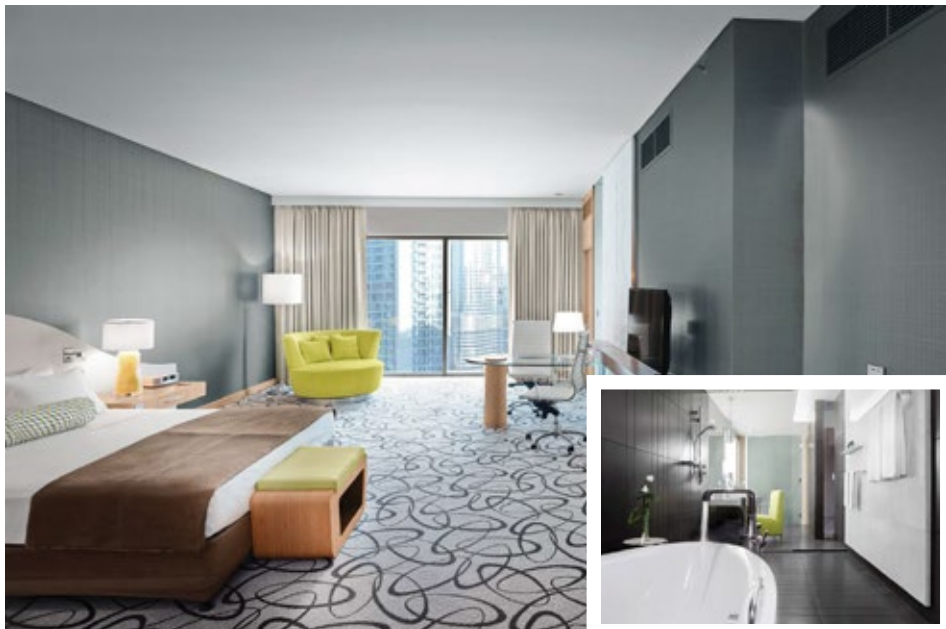
- LED HD TV, JBL® sound system
- Complimentary wifi

Your Every Need Anticipated

- 24-Hour in-room dining
- Mini bar with coffee machine
- Access to Club Millésime VIP lounge







JUNIOR SUITES

This suite is the luxury of space featured in a full 63sqm of elegant refinement. Relax in the cleverly designed living space, complemented by magnifique views of the spectacular scene of Downtown Dubai. Enjoy exclusive access to Club Millésime along with private check-in facilities as well as light bites in a charming old world French country style setting.

For Your Comfort

- King-size bed
- Bespoke signature Sofitel MyBed™
- Pillow menu to suit personal preferences
- Separate living room

A Thoughtfully Appointed Bathroom

- Large bathroom, separate bathtub and rain-shower
- Selection of upscale signature toiletries and luxury bath amenities

The Latest In Must-Have Technology

- LED HD TV, JBL® sound system
- Complimentary wifi

63 sqm x24



Your Every Need Anticipated

- 24-Hour in-room dining
- Mini bar with coffee machine

- **LUXURY CLUB BURJ KHALIFA VIEW**
- **LUXURY CLUB ROOMS**

Experience the height of luxury in this spacious room with scenic views of the city or a partial view of Burj Khalifa along with with access to our exclusive Club Milleseme VIP Lounge.

Located on the top floors of the hotel tower.

For Your Comfort

- King bed or twin bed to choose from
- Bespoke signature Sofitel MyBed™
- Pillow menu to suit personal preferences

A Thoughtfully Appointed Bathroom

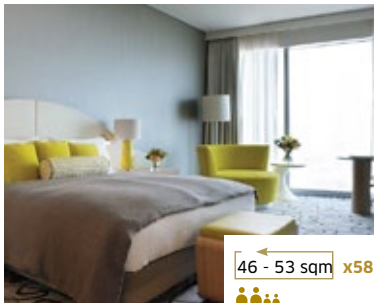
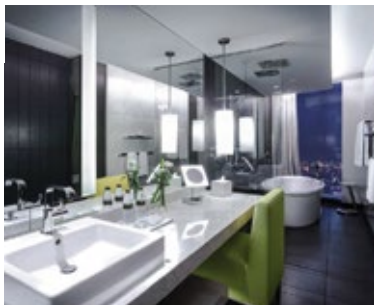
- Large bathroom, separate bathtub and rain-showers
- Selection of upscale signature toiletries and luxury bath amenities

The Latest In Must-Have Technology

- LED HD TV, JBL® sound system
- Complimentary wifi

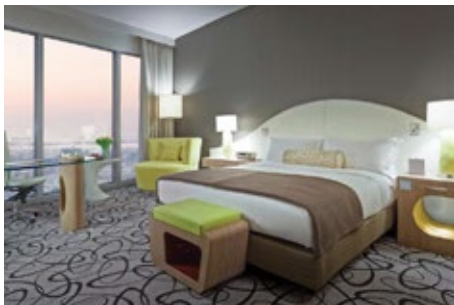
Your Every Need Anticipated

- 24-Hour in-room dining
- Mini bar with coffee machine
- Access to Club Millésime VIP Lounge



46 - 53 sqm x58





- **LUXURY BURJ KHALIFA VIEW**
- **LUXURY COASTLINE VIEW**
- **LUXURY ROOMS**

Lavish in the panoramic views of Dubai's coastline or a partial view of the Burj Khalifa that our luxury rooms feature as you enjoy, indulge and sink into the comfort of the Sofitel signature MyBed™.

For Your Comfort

- King bed or twin bed to choose from
- Bespoke signature Sofitel MyBed™
- Pillow menu to suit personal preferences

A Thoughtfully Appointed Bathroom

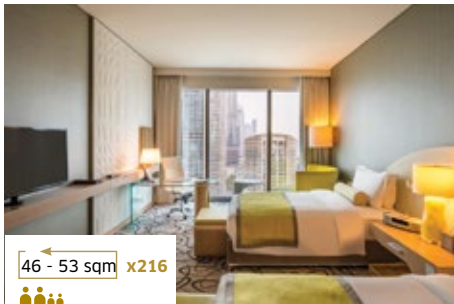
- Large bathroom, separate bathtub and rain-showers
- Selection of upscale signature toiletries and luxury bath amenities

The Latest In Must-Have Technology

- LED HD TV, JBL© sound system
- Complimentary wifi

Your Every Need Anticipated

- 24-Hour in-room dining
- Mini bar with coffee machine



46 - 53 sqm x216



SOFIE'S LADIES ROOMS / FLOOR

Sofie's Ladies Floor, located on the 15th floor features 12 exquisite rooms and suites. Full-length windows provide sweeping views of Downtown Dubai, Burj Khalifa and the Arabian Gulf. Rooms include several elegant feminine touches and a host of amenities to enhance the experience and provide added comfort, service, style and quality. (Only lady travelers and / or with children are allowed to register in these rooms)

For Your Comfort

- King bed or twin bed to choose from
- Bespoke signature Sofitel MyBed™
- Pillow menu to suit personal preferences

A Thoughtfully Appointed Bathroom

- Large bathroom, separate bathtub and rain-showers
- Selection of upscale signature toiletries and luxury bath amenities



The Latest In Must-Have Technology

- LED HD TV, JBL© sound system
- Complimentary wifi

Your Every Need Anticipated

- 24-Hour in-room dining
- Mini bar with coffee machine

46 - 53 sqm x12





LUXURY KIDS & FAMILY ROOM & LE PETIT PRINCE KIDS CLUB

This warm and elegant room features a contemporary design that offers bunk beds, working space and a King size Sofitel MyBed™. Perfect for families, the room can fit up to 2 adults and 2 kids with separate shower and bath. Children can also spend hours in a stimulating environment in the brightly colored Le Petit Prince Kids Club with indoor and outdoor play area.



Your Every Need Anticipated

- 24-Hour in-room dining
- Mini bar with coffee machine

For Your Comfort

- King bed and two bunk beds
- Bespoke signature Sofitel MyBed™
- Pillow menu to suit personal preferences
- Special kids amenities

A Thoughtfully Appointed Bathroom

- Large bathroom, separate bathtub and rain-showers
- Selection of upscale signature toiletries and luxury bath amenities

The Latest In Must-Have Technology

- LED HD TV, JBL® sound system
- Complimentary wifi

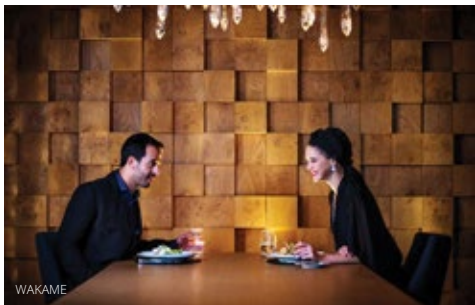
← 46 - 53 sqm x10



L'APERO LOUNGE

L' Apero is a French Mediterranean concept lounge serving a repertoire of classic "Terroir" French home-style food with rustic French décor and a terrace with an electronic open ceiling where the shisha is served. The restaurant offers selections of French-style bites and sandwiches. Guests can choose from a well-curated beverage list, freshly baked bread, and pastries all served in a laidback casual style environment. L'Apero opens at 12 noon daily and turns into Apero Chic a Happy hour venue and later the ambiance will be transformed into a charming enchanted After party lounge over weekends.





WAKAME

RESTAURANTS, LOUNGES & NIGHTCLUBS

Enjoy a culinary journey from the four corners of the globe in the heart of Downtown Dubai. Impressive venues, delicious treats and heartwarming service await at any of our gorgeous restaurants, bars or lounges:



LA PÂTISSERIE

L'APERO - LOUNGE

WAKAME - Asian Restaurant

LES CUISINES - International Restaurant

LA PÂTISSERIE - Cafe Lounge

MOSAIC - Pool Bar

Room Service - 24hrs



WELL-BEING & SPA

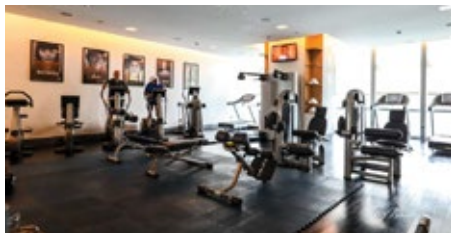
• SOFITEL SPA

Ancient traditions from around the world meet refinement and the latest in French cosmetology to create Sofitel Spa.

An exhilarating and rejuvenating experience. includes 8 treatment rooms, a couples treatment room, dry sauna, steam room and hammam facilities.

• SOFITEL FITNESS

Achieve your fitness goal with our Fitness Center. Take the time to get in shape in-between business meetings or shopping sprees with our state-of-the-art fitness equipment.

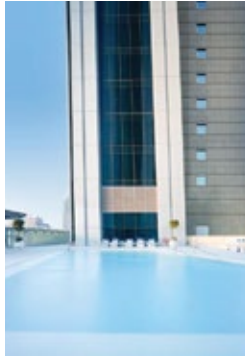


AN URBAN OASIS

Unwind to the urban views of the bustling Downtown Dubai and its skyscrapers on the 5th floor rooftop terrace.

Swim across our 60-metre infinity pool or enjoy a leisure splash with your young ones at our children's pool. If you want a more private, tranquil and quiet setting, hotel guests also have access to our residential pool, overlooking Sheikh Zayed Road.

Mosaic Pool Bar offers a selection of cocktails, juices and light bites for a more refreshing experience at the poolside to accompany your panoramic views of the city.



MAGNIFIQUE MEETINGS™

Set the stage in our ballroom, meeting rooms or indulge in a poolside cocktail party with impressive views of Downtown Dubai and Burj Khalifa. Our Magnifique Meetings team will always be on hand to ensure a Magnifique experience.

Distinctive features

- A dedicated floor with 12 Meeting rooms all with natural day-light
- Spacious and trendy pre-function area
- Built-in audiovisual equipments
- Variety of screen sizes
- Diamond Ballroom that can split into 3 sections
- Creative and flexible banqueting menus
- Outdoor venues with amazing views of Downtown Dubai





INSPIRED BY YOU STAGED BY US

Sofitel Dubai Downtown brings an oasis of art and a touch of geometric chic in the center of bustling business and leisure destination. With more than 2000 sqm of floor space, select from our 15 meeting rooms including our Diamond ballroom, with outdoor and indoor venues to host your special events and conferences.

Our Magnifique Meetings team will work with you at every step of the way to ensure that your event is perfectly designed.

REFINED MEETING ROOMS

To the sight and to the touch, our venues express sophistication and modernity. Most of our venues are rich in color and filled with natural daylight, having names that resemble different gems to exemplify Sofitel luxury and service. Ranging in size from 35 sqm to 460 sqm, our meeting rooms are customized with coffee machines, free WiFi and the latest in audio-visual technology to facilitate your day.



UNIQUE AND TAILOR-MADE EVENTS AND CONFERENCES

The Diamond Ballroom – designed with a spectacular crystal chandelier that sprawls across the entire ceiling, can host up to 600 people. We provide the finest delicacies from around the world for every kind of event and occasion with many different types of cuisines available from our specialty chefs. The ballroom also offers a VIP Lounge adjacent to it so organisers can easily access it.

Our venues are truly inspirational and exceptional – the 5th floor pool terrace with astounding views of Downtown Dubai is our most dramatic setting for up to 500 guests.

DIAMOND BALLROOM FLOOR PLAN



FIRST FLOOR MEETING ROOMS FLOOR PLAN



QUARTZ

SQM 35 (8.63M X 4.80M)

RUBY

SQM 37 (9.10M X 4.84M)

JADE

SQM 37 (9.10M X 4.84M)

EMERALD

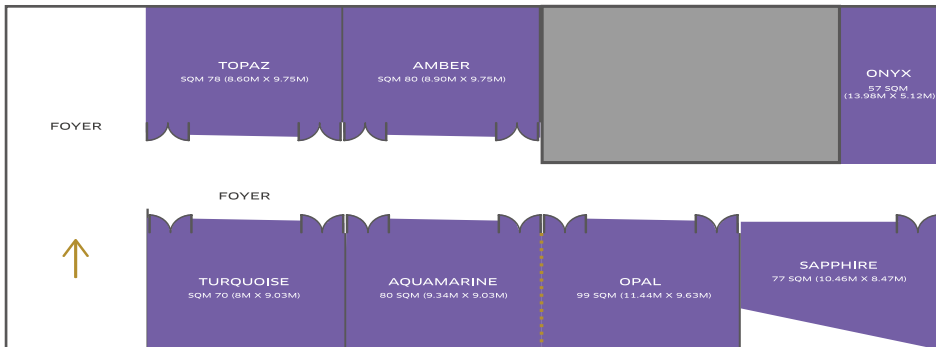
SQM 35 (8.13M X 5.12M)

AMETHYST

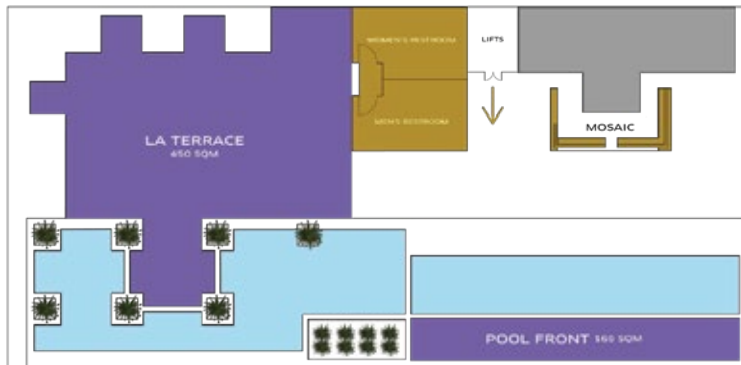
SQM 36 (8.75M X 5M)

RESTROOMS

BUSINESS
CENTER



5TH FLOOR GRASS POOL AREA FLOOR PLAN



MAGNIQUE MEETINGS™ CAPACITY CHART / INDOOR

VENUE	AREA (SQM)	LENGTH (M)	WIDTH (M)	CEILING HEIGHT (M)	CLASSROOM	THEATRE	U SHAPE	BOARDROOM	DINNER	COCKTAIL	CABARET
TOPAZ	78	10	8	3	36	60	27	20	50	70	32
AMBER	80	10	9	3	36	60	27	20	50	70	32
ONYX	57	13	4	3	–	–	–	18	24	–	–
SAPPHIRE	77	10	8	3	18	32	15	15	40	40	18
OPAL	99	12	10	3	45	75	27	26	60	75	40
AQUAMARINE	80	9	10	3	36	65	27	20	50	70	32
OPAL & AQUAMARINE	179	21	10	3	87	150	54	–	120	150	88
TURQUOISE	70	8	10	3	36	60	24	20	50	60	30
AMETHYST	36	9	4	3	–	–	–	10	12	–	–
EMERALD	35	9	4	3	–	–	–	10	12	–	–
JADE	37	9	4	3	–	–	–	10	12	–	–
RUBY	37	9	4	3	15	25	12	14	20	25	12
QUARTZ	35	8	4	3	15	25	12	14	20	25	12
GALLERY	218	–	–	5	24	40	25	20	60	70	24
DIAMOND BALLROOM	460	27	17	7	300	600	–	–	450	650	256
DIAMOND 1	148	9	17	7	80	150	40	40	100	200	64
DIAMOND 2	160	9	17	7	90	170	40	40	130	220	80
DIAMOND 3	148	9	17	7	80	150	40	40	100	200	64
DIAMOND 2&1 or 3&2	306	18	17	7	150	350	100	45	230	400	128

NEARBY

UNDER 10 MIN WALK

AIR-CONDITIONED SKYWALK

Burj Khalifa • The Dubai Mall • Dubai Fountain
• Dubai Aquarium • KidZania
Virtual Reality Park • Dubai Ice Rink • Emaar Square

UNDER 10 MIN WALK

OPEN AIR WALK

Coca-Cola Arena • City Walk • Green Planet • Dubai Opera

3-5 METRO STOPS

Dubai World Trade Centre • Dubai International Financial
Centre • Mall of The Emirates • Gold & Diamond Park
The Museum of The Future

SHUTTLE SERVICE AT SELECTED TIMES TO THE FOLLOWING:

• La Mer • Laguna Waterpark • Kite Beach (Burj Al Arab View)
• Dubai International Financial Centre • Mall of The Emirates
• Emaar Square • Business Bay

30-35 MIN BY METRO

• Expo 2020 Site







داون تاون دبي - شارع الشيخ زايد - ص.ب ١٢٦٢٧٢ - دبي - الإمارات العربية المتحدة

Downtown Dubai - Sheikh Zayed Road - PO BOX 126272 - Dubai - United Arab Emirates

Tel +971 4 503 6666 - FAX +971 4 503 6667

Email: H7492@SOFITEL.COM - WWW.SOFITEL.COM



SOFITLDUBAIDOWNTOWN



SOFITELDXBDOWNT